



Share Fabrics via CLO-set

URBN - Production & Sourcing
3D

Fabric Test

1. Pass the fabric to test.

Contact each brands fabric team:

FP: Kelsey Hughes khughes1@urbn.com

Anthro: Karenn Lemos Reichert klemosreichert@urbn.com

UO: Carly Kandler ckandler@urbn.com

Fabric Digital Files



SUNNY AFTERNOON JACQUARD.zfab

4/15/2021 9:03 AM

ZFAB File

11 KB

- Zfab File: CLO fabric files

Contains the property values (texture + physical properties) of the set Fabric.
See examples above.

- xTex File: Fabric scan files

Contains the repeat texture and normal maps of the .zfab fabric.
See examples on the right.

- Zprj File: CLO project files

Contains the cone drape of the .zfab fabric.
See examples on the right.



File Location

On Shared Drive:

S:\Production\Fabric R&D\CLO

In CLO-set:

<https://style.clo-set.com/brand/11303>

Create/Save digital fabric file

1. Input the test result from Dight Fabric Sheet to CLO emulator.

Follow tutorial: <https://support.clo3d.com/hc/en-us/articles/115000565548--Mode-Emulator>

DIGITAL FABRIC SHEET (DFS)									
FOR URBAN INTERNAL USE ONLY									
Date:									
Fabric code:	BCQ								
Fabric name:									
Brand:	ANTHRO								
Fabric type:	WOVEN <input checked="" type="checkbox"/> KNIT <input type="checkbox"/> LEATHER <input type="checkbox"/>								
	CORE <input checked="" type="checkbox"/> NON-CORE <input type="checkbox"/>								
Mill Name:	TUNG GA								
Mill Article #:									
Content:									
Fabric Weight and Unit of Measure: (oz, g/yd, g/m, gsm)									
High resolution image uploaded	Cone image uploaded:								
CLO READINGS									
WEIGHT (G):	3.14			THICKNESS (MM):	40				
BEND TEST									
WEFT			WARP			BIAS			
CONTACT DISTANCE:	36			CONTACT DISTANCE:	37			CONTACT DISTANCE:	30
CONTACT LENGTH:	44			CONTACT LENGTH:	48			CONTACT LENGTH:	40
STRETCH TEST									
WEFT			WARP			BIAS			
LENGTH (mm)	FORCE:		LENGTH (mm)	FORCE:		LENGTH (mm)	FORCE:		
1	1	0.089	1	1	0.042	1	6	0.01	
2	2	0.191	2	2	0.074	2	7	0.014	
3	3	0.31	3	3	0.118	3	8	0.017	
4	4	0.409	4	4	0.16	4	9	0.021	
5	5	0.54	5	5	0.195	5	10	0.026	



Information			
Name	Fabric1536		
Fabric Type	Select		
Supplier	None		
Owner	None		

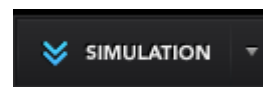
Weight and Thickness			
Width / Height (mm)	220.00 x 30.00		
Weight (g)			
Thickness (mm)			

Bending Test			
	Weft	Warp	Bias
Contact Distance (mm)			
Length (mm)			

Stretch Test					
Weft		Warp		Bias	
	Length (mm)	Force (kgf)		Length (mm)	Force (kgf)
1			1		
2			2		
3			3		
4			4		
5			5		

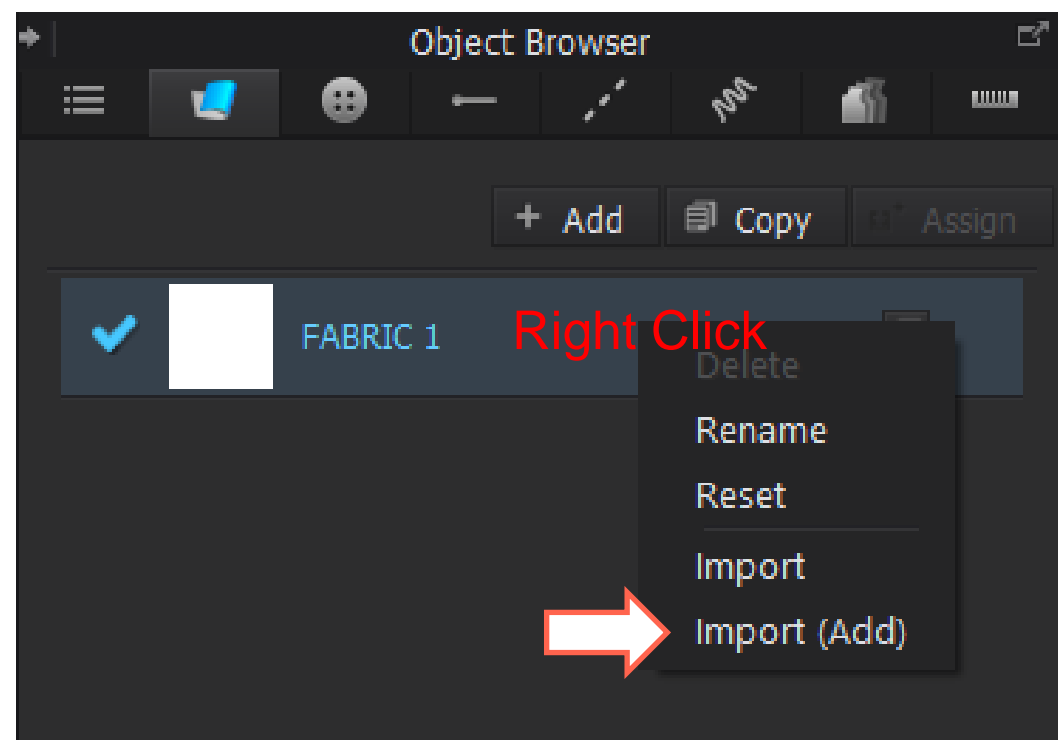
Create/Save digital fabric file

2. Save the result as .Zfab file. Open it in CLO simulation and add texture and normal maps from the xTex test folder.



Method 1: Add .xTex file (if cannot find the file, see method 2)

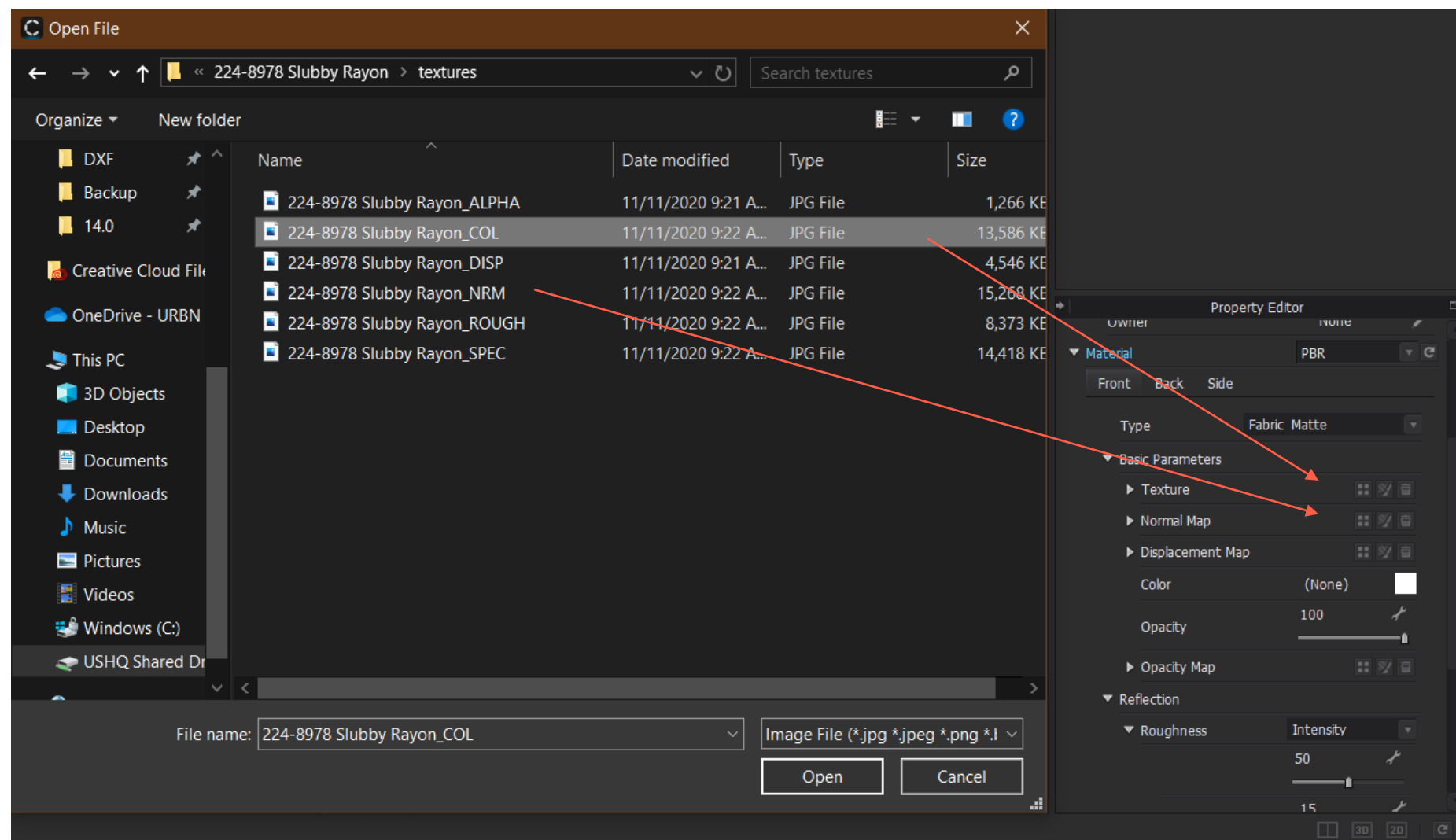
Follow tutorial : <https://support.clo3d.com/hc/en-us/articles/115000483867-Vizoo-File-Compatibility->



Share digital fabric file

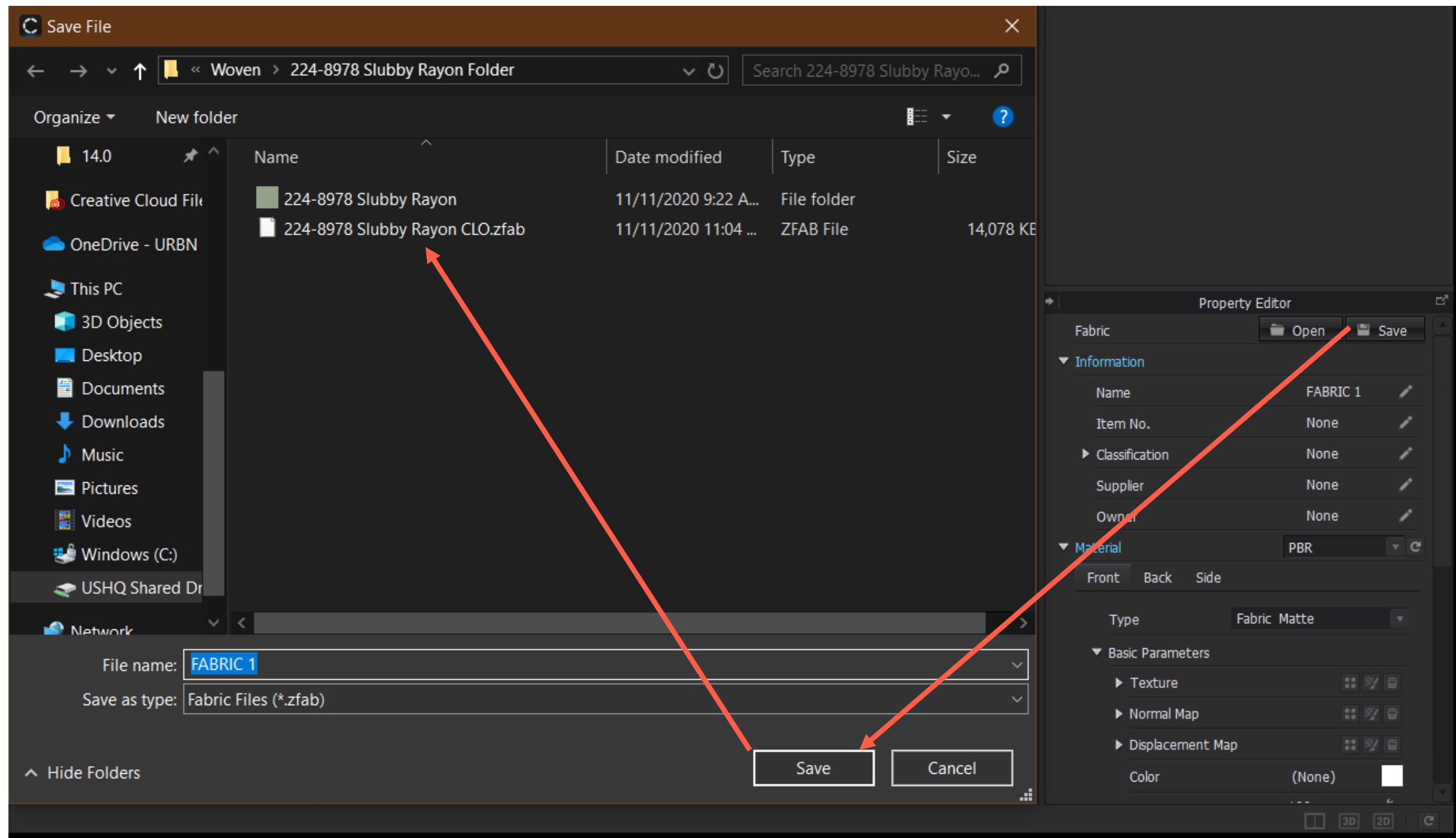
2. Save the result as .Zfab file. Open it in CLO simulation and add texture and normal maps from the xTex test folder.

Method 2: Manually add the texture and normal maps to the fabric.



Share digital fabric file

3. Save the final .Zfab file



Share digital fabric file

4. Share the final .Zfab file via attachment to CLO-set styles' page.

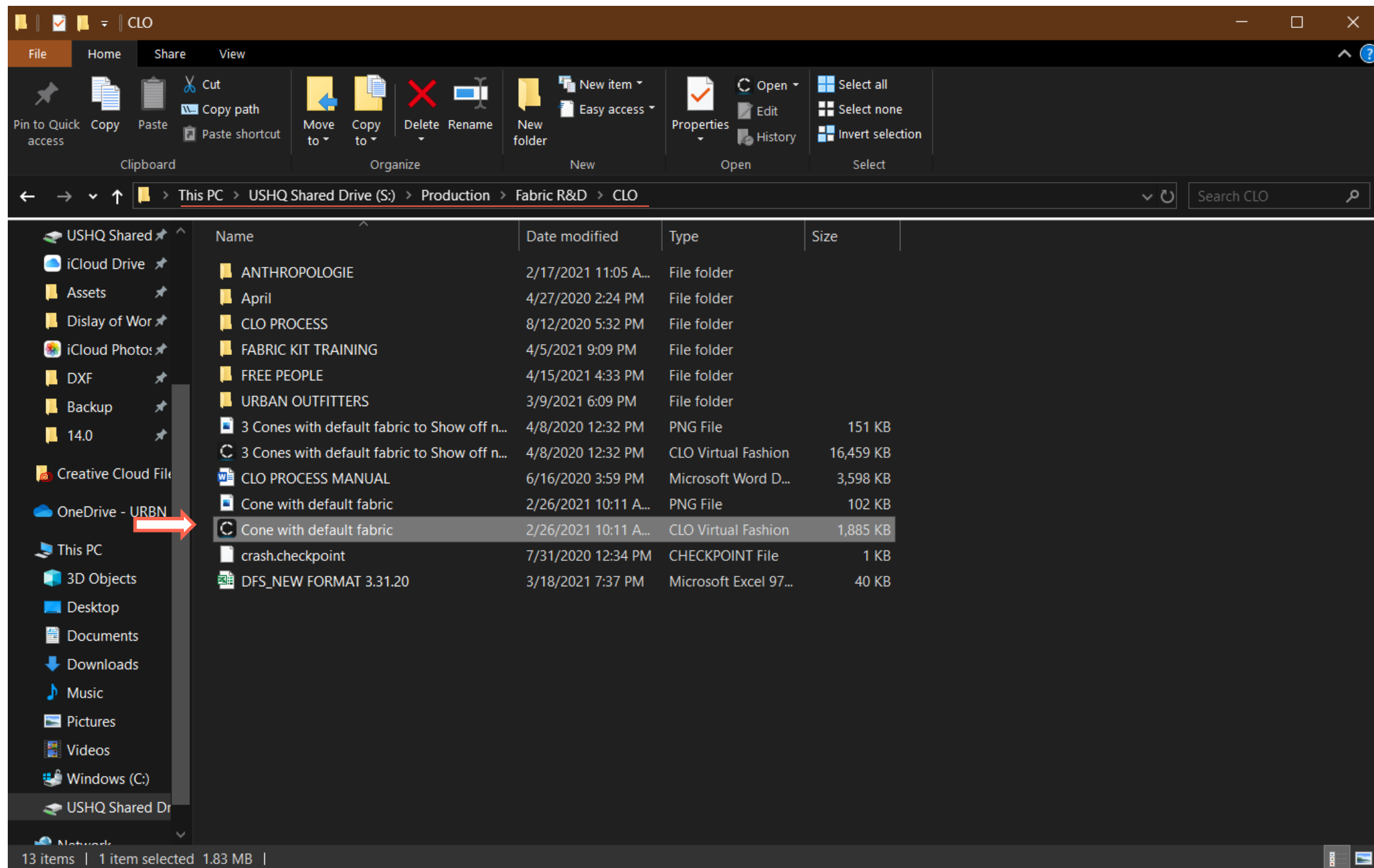
The screenshot displays a Windows File Explorer window titled 'Open' with the address bar showing the path: < Production > Fabric R&D > CLO > FREE PEOPLE > Woven > 108-0108 - Tiny Pucker Chiffon. The left sidebar shows the 'This PC' view with various locations like 3D, CLO, USHQ Shared, iCloud Drive, Assets, Display of Wor, DXF, Backup, 14.0, Creative Cloud File, OneDrive - URBN, and This PC. The main pane shows a list of files and folders:

Name	Date modified	Type	Size
3.19 added	3/19/2021 3:43 AM	File folder	
Tiny Pucker Chiffon	3/17/2021 9:59 AM	File folder	
108-0108 - Tiny Pucker Chiffon Clo Cone	3/22/2021 9:58 AM	PNG File	518 KB
108-0108 - Tiny Pucker Chiffon Clo Cone	3/22/2021 9:58 AM	CLO Virtual Fashion	0 KB
Tiny Pucker Chiffon CLO.zfab	3/17/2021 12:29 A...	ZFAB File	11 KB

The 'File name' field at the bottom shows 'Tiny Pucker Chiffon CLO.zfab'. To the right, the CLO-SET web interface is visible, showing the 'ATTACHMENT' section with a 'VERSION' dropdown set to '1. FPM121 DROPPED SHOULDER LONG SLE...'. A red arrow points from the 'Tiny Pucker Chiffon CLO.zfab' file in the File Explorer to the 'UPLOAD A FILE' button in the CLO-SET interface.

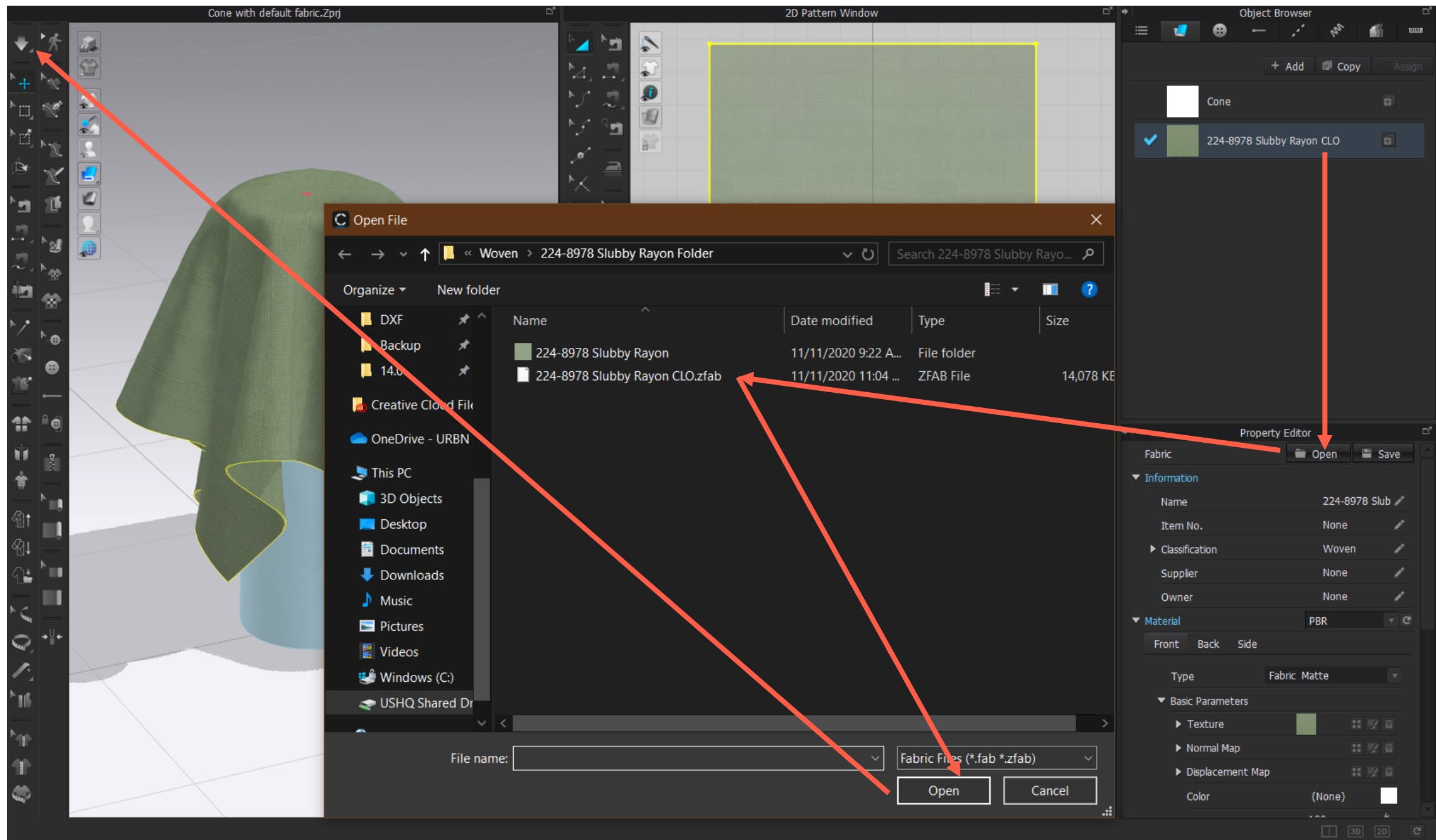
Share .zprj fabric file

1. Open the Cone Drape Template in Shared Drive.



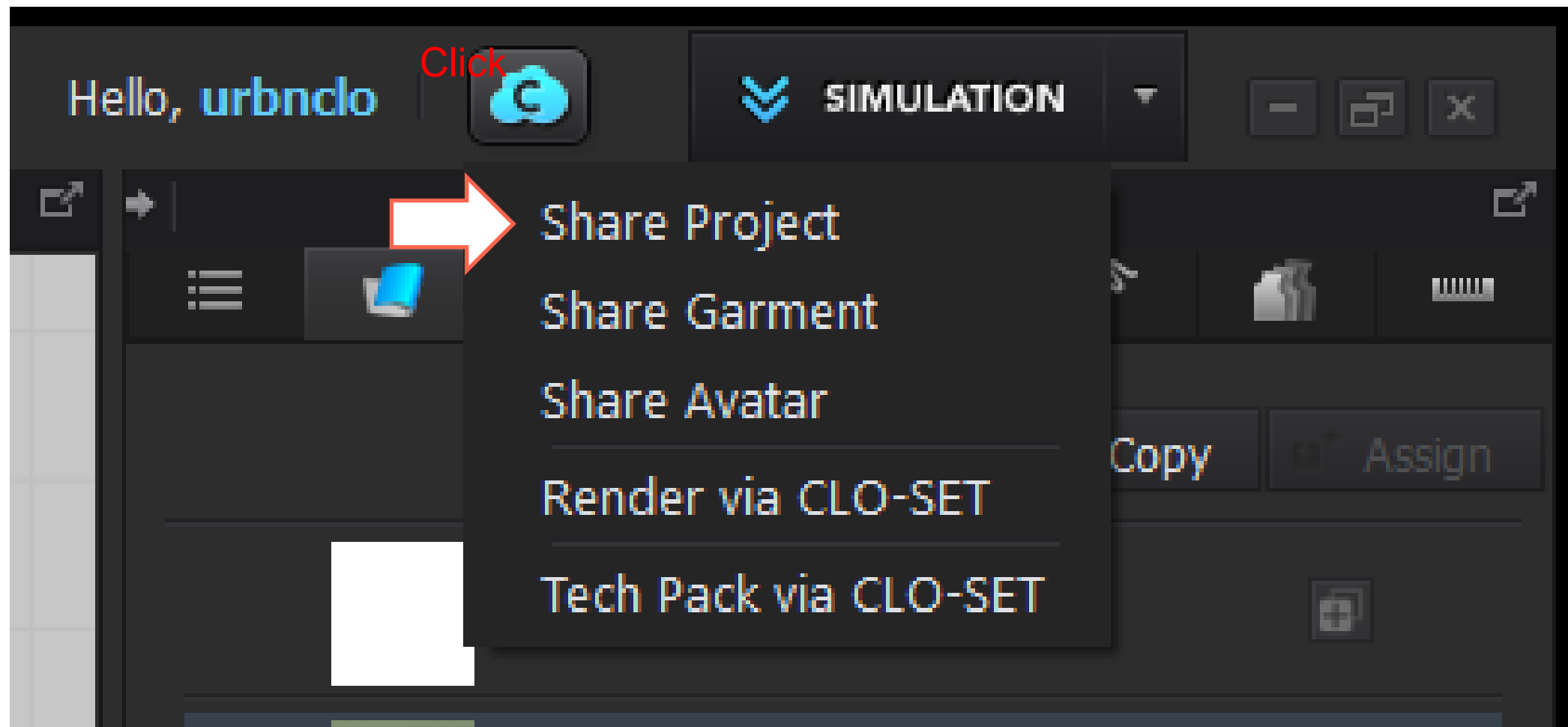
Share .zprj fabric file

2. Open the .zfab fabric file, simulate till the fabric stay still, and save project.



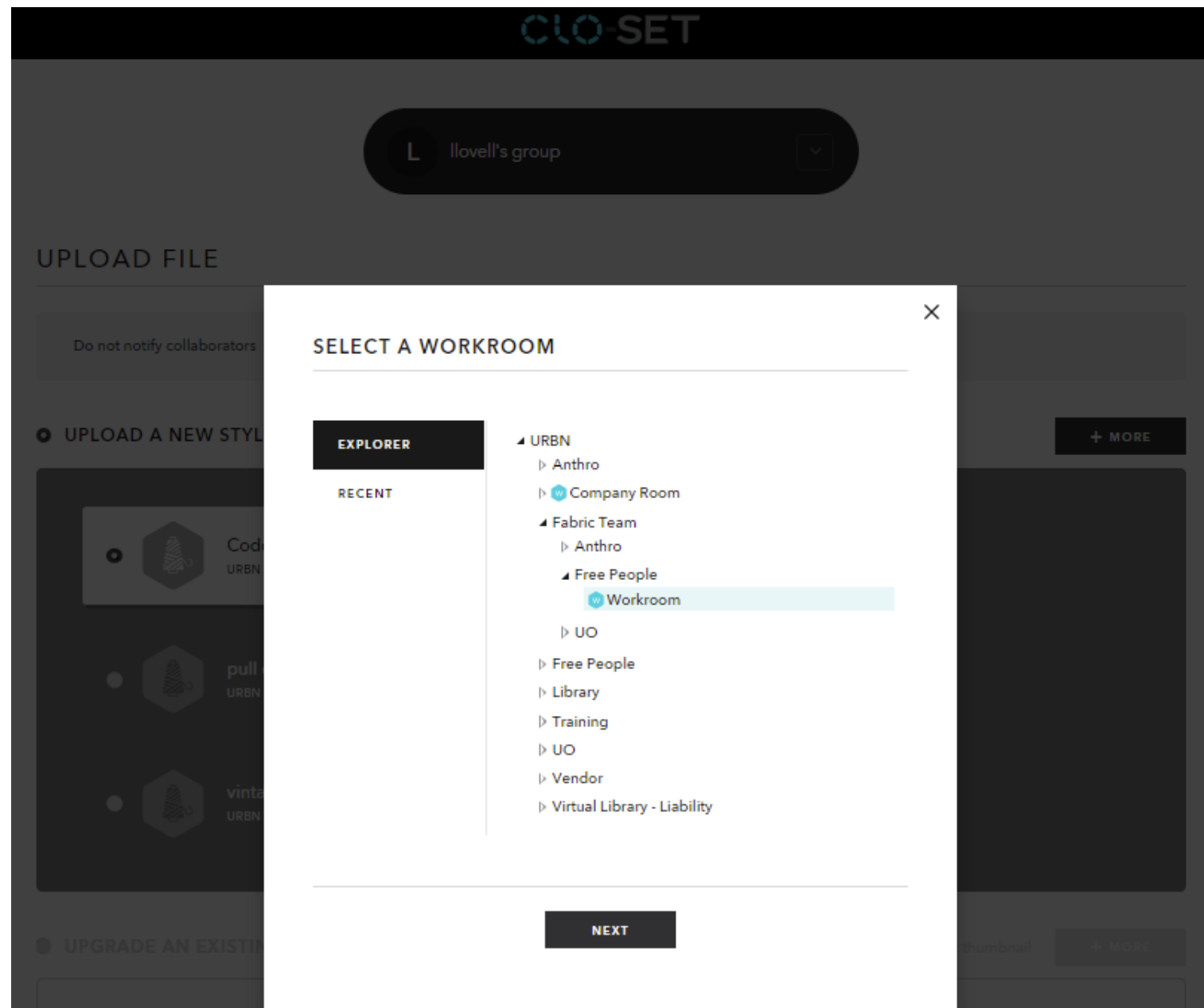
Share .zprj fabric file

3. Share the .zprj fabric file to CLO-set



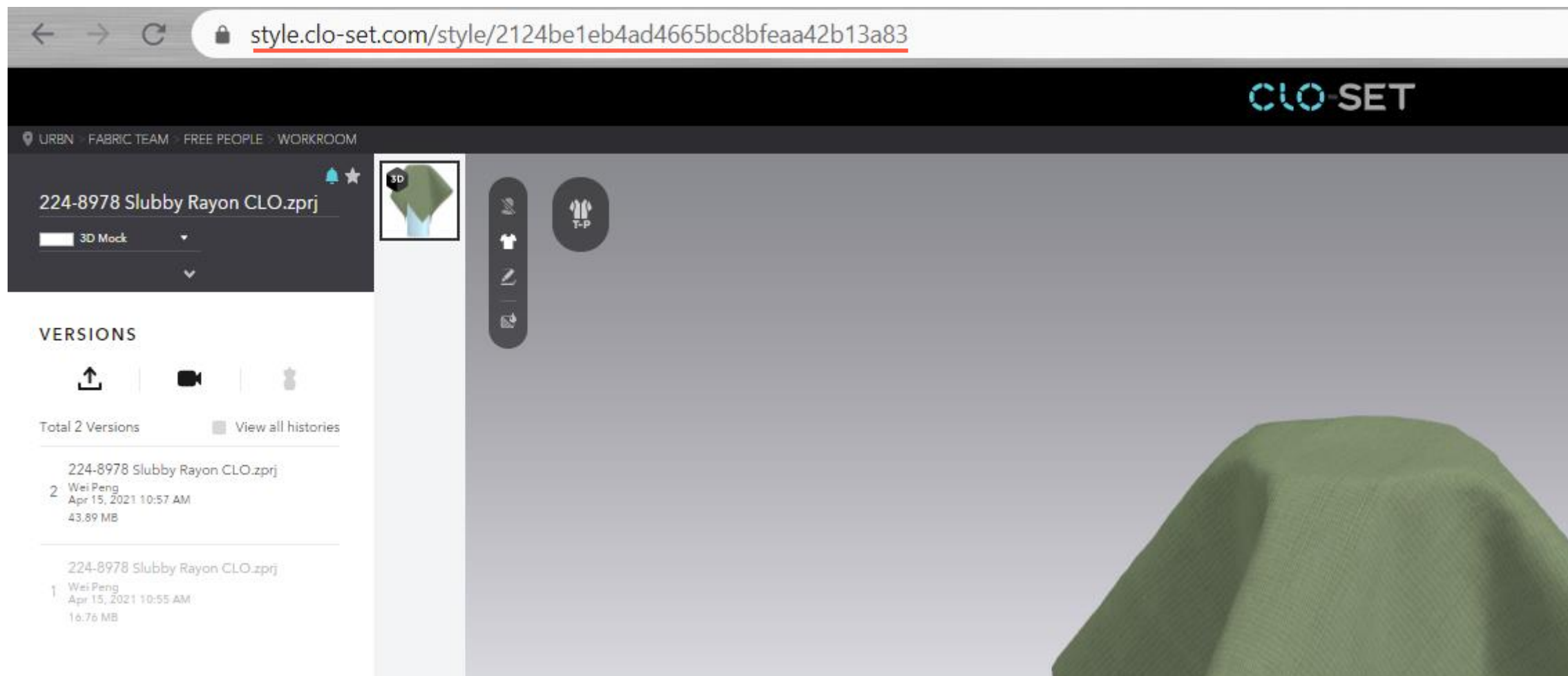
Share .zprj fabric file

4. Save it to CLO-set under URBN/Fabric Team/Brands/Workroom.



Share .zprj fabric file

5. Copy and paste the web link to share to people have access to the room.



Thanks!

Any 3D related questions, please reach out:

Wei Peng: wpeng@urbn.com
Lynda Lovell: llovell@urbn.com

CLO-set example link: <https://style.clo-set.com/room/224097>